

Oval Tubular Handles

Tube Aluminum, Handle Legs Zinc Die Casting,
Mounting from the Operator's Side

SPECIFICATION

Handle tube

Aluminum

- Powder coated
Black, RAL 9005, textured finish **SW**
Handle legs black
- Anodized, natural color **EL**
Handle legs black
- Anodized, natural color **ES**
Handle legs silver

Handle legs

Zinc die casting

Powder coated, textured finish

- Black, RAL 9005 for SW / EL
- Silver, RAL 9006 for ES

Cover

Plastic, light gray



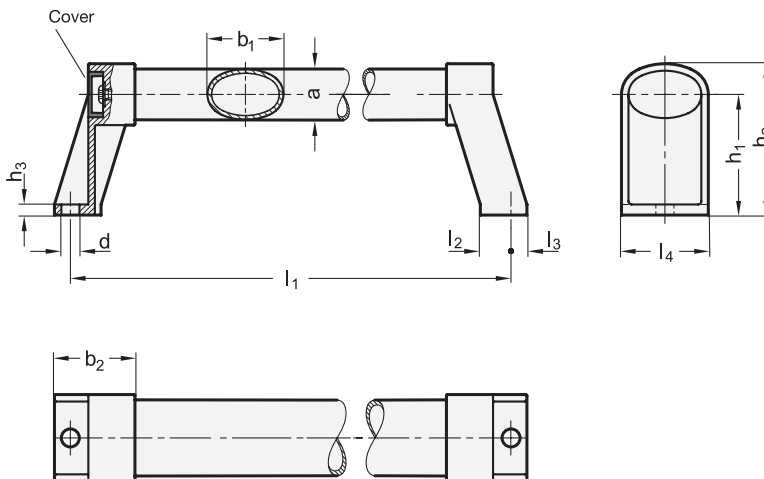
INFORMATION

Oval tubular handles GN 334.1 are highly stable.

The handle tube can be mounted without any further machining, allowing special lengths to be realised easily.

TECHNICAL INFORMATION

- Load Rating Information (see page A35)



* Complete with

SW **EL** **ES**

GN 334.1

Description	b ₁	l ₁ ±0.5	a	b ₂	d	h ₁	h ₂	h ₃	l ₂	l ₃	l ₄	Δ
GN 334.1-36-200-*	36	200	24	38	8.5	57	72	5	14.5	7.5	41	440
GN 334.1-36-250-*	36	250	24	38	8.5	57	72	5	14.5	7.5	41	460
GN 334.1-36-300-*	36	300	24	38	8.5	57	72	5	14.5	7.5	41	522
GN 334.1-36-350-*	36	350	24	38	8.5	57	72	5	14.5	7.5	41	600
GN 334.1-36-400-*	36	400	24	38	8.5	57	72	5	14.5	7.5	41	620
GN 334.1-36-500-*	36	500	24	38	8.5	57	72	5	14.5	7.5	41	700
GN 334.1-36-600-*	36	600	24	38	8.5	57	72	5	14.5	7.5	41	780
GN 334.1-36-800-*	36	800	24	38	8.5	57	72	5	14.5	7.5	41	960

Weight SW